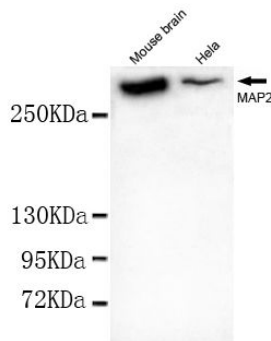




MAP2 (N-term)

Mouse monoclonal Antibody

#53559

**Catalog Number:** 53559**Amount:** 100µg/100µl**Swiss-Prot No. :** P11137**Gene name:** map2**Gene id:** 4133**Clone Number:** 1D7-B9-C8-F6**Form of Antibody:** Purified mouse monoclonal in buffer containing 0.1M Tris-Glycine (pH 7.4, 150 mM NaCl) with 0.2% sodium azide, 50% glycerol**Storage/Stability:** Store at -20°C/1 year**Immunogen:** Purified recombinant human MAP2(N-term) protein fragments expressed in E.coli.**Purification:** affinity-chromatography**Specificity/Sensitivity:** This antibody detects endogenous levels of MAP2(N-term) and does not cross-react with related proteins**Reactivity:** Human, Mouse,**Applications:** Predicted MW: 300kd WB: 1:1000 ICC:1:150

Western blot detection of MAP2(N-terminus) in Mouse Brain tissue and HeLa cell lysates using MAP2(N-terminus) mouse mAb (1:1000 diluted). Predicted band size: 202KDa. Observed band size: 300KDa.

**Background :**

This gene encodes a protein that belongs to the microtubule-associated protein family. The proteins of this family are thought to be involved in microtubule assembly, which is an essential step in neurogenesis. The products of similar genes in rat and mouse are neuron-specific cytoskeletal proteins that are enriched in dendrites, implicating a role in determining and stabilizing dendritic shape during neuron development. A number of alternatively spliced variants encoding distinct isoforms have been described.