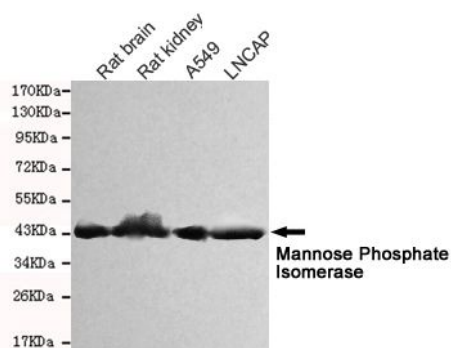




# Mannose Phosphate Isomerase

## Mouse monoclonal Antibody

#53165

**Catalog Number:** 53165**Amount:** 100µg/100µl**Swiss-Prot No. :** P34949**Gene name:** mpi**Gene id:** 4351**Clone Number:** 4G9-B4-B8**Form of Antibody:** Purified mouse monoclonal in buffer containing 0.1M Tris-Glycine (pH 7.4, 150 mM NaCl) with 0.2% sodium azide, 50% glycerol**Storage/Stability:** Store at -20°C/1 year**Immunogen:** Purified recombinant human Mannose Phosphate Isomerase protein fragments expressed in E.coli.**Purification:** affinity-chromatography**Specificity/Sensitivity:** This antibody detects endogenous levels of Mannose Phosphate Isomerase and does not cross-react with related proteins**Reactivity:** Human, Rat**Applications:** Predicted MW: 54 kd WB: 1:1000 ICC:1:300

Western blot detection of Mannose Phosphate Isomerase in Rat kidney, Rat brain, A549 and Lncap cell lysates and using Mannose Phosphate Isomerase mouse mAb (1:1000 diluted). Predicted band size: 54KDa. Observed band size: 45KDa.

**Background :**

Phosphomannose isomerase catalyzes the interconversion of fructose-6-phosphate and mannose-6-phosphate and plays a critical role in maintaining the supply of D-mannose derivatives, which are required for most glycosylation reactions. Mutations in the MPI gene were found in patients with carbohydrate-deficient glycoprotein syndrome, type Ib.