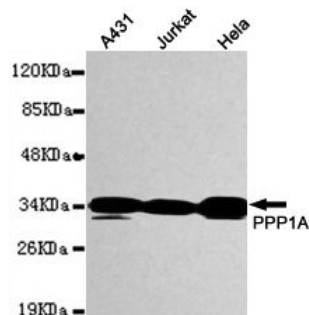




PPP1A

Mouse monoclonal Antibody

#53171

Catalog Number: 53171**Amount:** 100µg/100µl**Swiss-Prot No. :** P62136**Gene name:** ppp1ca**Gene id:** 5499**Clone Number:** 1C11-C10-H5-E9**Form of Antibody:** Purified mouse monoclonal in buffer containing 0.1M Tris-Glycine (pH 7.4, 150 mM NaCl) with 0.2% sodium azide, 50% glycerol**Storage/Stability:** Store at -20°C/1 year**Immunogen:** Purified recombinant human PPP1A protein fragments expressed in E.coli.**Purification:** affinity-chromatography**Specificity/Sensitivity:** This antibody detects endogenous levels of PPP1A and does not cross-react with related proteins**Reactivity:** Human**Applications:** Predicted MW: 38 kd WB: 1:1000 IHC/ICC:1:300

Western blot detection of PPP1A in MCF7, K562, HeLa, HEPG2 and Jurkat whole cell lysates using PPP1A mouse mAb (1:1000 diluted). Predicted band size: 38KDa. Observed band size: 38KDa.

Background :

The protein encoded by this gene is one of the three catalytic subunits of protein phosphatase 1 (PP1). PP1 is a serine/threonine specific protein phosphatase known to be involved in the regulation of a variety of cellular processes, such as cell division, glycogen metabolism, muscle contractility, protein synthesis, and HIV-1 viral transcription. Increased PP1 activity has been observed in the end stage of heart failure. Studies in both human and mice suggest that PP1 is an important regulator of cardiac function. Mouse studies also suggest that PP1 functions as a suppressor of learning and memory. Three alternatively spliced transcript variants encoding different isoforms have been found for this gene.