



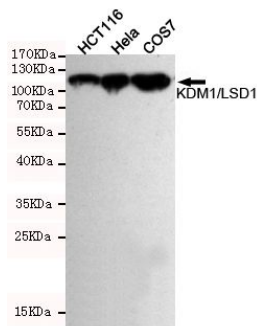
KDM1/LSD1

Mouse monoclonal Antibody

#53108

Catalog Number: 53108**Amount:** 100µg/100µl**Swiss-Prot No. :** O60341**Gene name:** kdm1a**Gene id:** 23028**Clone Number:** 1E5-H2**Form of Antibody:** Purified mouse monoclonal in buffer containing 0.1M Tris-Glycine (pH 7.4, 150 mM NaCl) with 0.2% sodium azide, 50% glycerol**Storage/Stability:** Store at -20°C/1 year**Immunogen:** Purified recombinant human KDM1/LSD1 protein fragments expressed in E.coli.**Purification:** affinity-chromatography**Specificity/Sensitivity:** This antibody detects endogenous levels of KDM1/LSD1 and does not cross-react with related proteins**Reactivity:** Human, Monkey**Applications:**

Predicted MW: 110 kd WB: 1:1000 ICC:1:100



Western blot detection of KDM1/LSD1 in HeLa, HCT116 and COS7 cell lysates using KDM1/LSD1 mouse mAb (1:1000 diluted). Predicted band size: 110KDa. Observed band size: 110KDa.

Background :

This gene encodes a nuclear protein containing a SWIRM domain, a FAD-binding motif, and an amine oxidase domain. This protein is a component of several histone deacetylase complexes, though it silences genes by functioning as a histone demethylase. Alternative splicing results in multiple transcript variants.