



## GluR2 (Ab-880) Antibody

#21284

**Catalog Number:** 21284-1, 21284-2

**Amount:** 50µg/50µl, 100µg/100µl

**Swiss-Prot No. :** P42262

**Form of Antibody:** Rabbit IgG in phosphate buffered saline (without Mg<sup>2+</sup> and Ca<sup>2+</sup>), pH 7.4, 150mM NaCl, 0.02% sodium azide and 50% glycerol.

**Storage/Stability:** Store at -20°C/1 year

**Immunogen:** The antiserum was produced against synthesized non-phosphopeptide derived from Human GluR2 around the phosphorylation site of serine 880 (I-E-S<sup>P</sup>-V-K)

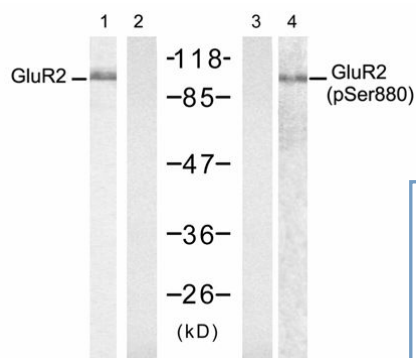
**Purification:** The antibody was affinity-purified from rabbit antiserum by affinity-chromatography using epitope-specific immunogen.

**Specificity/Sensitivity:** GluR2(Ab-880) Antibody detects endogenous levels of total GluR2 protein

**Reactivity:** Human, Mouse, Rat

### Applications:

Predicted MW: 100 kd      WB :1:500~1:1000



Peptide - + - -

P-Peptide - - + -

### Background :

Ionotropic glutamate receptor. L-glutamate acts as an excitatory neurotransmitter at many synapses in the central nervous system. Binding of the excitatory neurotransmitter L-glutamate induces a conformation change, leading to the opening of the cation channel, and thereby converts the chemical signal to an electrical impulse. The receptor then desensitizes rapidly and enters a transient inactive state, characterized by the presence of bound agonist.

### References:

Cull-Candy, S. et al. (2006) Curr. Opin. Neurobiol. 16, 288-297.

Hanley JG, et al. (2002) Neuron. 34(1): 53-67