



GABRB1 (Ab-434) Antibody

#21205

Catalog Number: 21205-1, 21205-2

Amount: 50µg/50µl, 100µg/100µl

Swiss-Prot No. : P18505

Form of Antibody: Rabbit IgG in phosphate buffered saline (without Mg²⁺ and Ca²⁺), pH 7.4, 150mM NaCl, 0.02% sodium azide and 50% glycerol.

Storage/Stability: Store at -20°C/1 year

Immunogen: The antiserum was produced against synthesized non-phosphopeptide derived from Human GABRB1 around the phosphorylation site of serine 434 (R-A-S_p-Q-L).

Purification: The antibody was affinity-purified from rabbit antiserum by affinity-chromatography using epitope-specific immunogen.

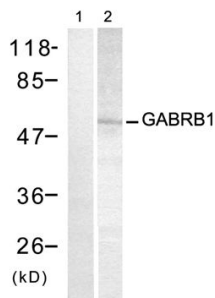
Specificity/Sensitivity: GABRB1(Ab-434) Antibody detects endogenous levels of total GABRB1 protein

Reactivity: Human, Mouse, Rat

Applications:

Predicted MW: 54 kd

WB: 1:500~1:1000



Western blot analysis of extracts from PC12 cells using GABRB1 (Ab-434) Antibody (#21205, Lane 1 and 2).

Peptide + -

Background :

The gamma-aminobutyric acid (GABA) A receptor is a multisubunit chloride channel that mediates the fastest inhibitory synaptic transmission in the central nervous system. This gene encodes GABA A receptor, beta 1 subunit. It is mapped to chromosome 4p12 in a cluster comprised of genes encoding a 4, a 2 and gamma 1 subunits of the GABA A receptor. Alteration of this gene is implicated in the pathogenetics of schizophrenia

References:

Collins AL, et al. (2006) Neurogenetics ;7(3):167-174.

Ma DQ, et al. (2005) Am J Hum Genet ;77(3):377-388.

Edenberg HJ, et al. (2004) Am J Hum Genet ;74(4):705-714.