



GAP43 (Phospho-Ser41) Antibody

#11281

Catalog Number: 11281-1, 11281-2

Amount: 50µg/50µl, 100µg/100µl

Swiss-Prot No. : P17677

Form of Antibody: Rabbit IgG in phosphate buffered saline (without Mg²⁺ and Ca²⁺), pH 7.4, 150mM NaCl, 0.02% sodium azide and 50% glycerol.

Storage/Stability: Store at -20°C/1 year

Immunogen: The antiserum was produced against synthesized phosphopeptide derived from Human GAP43 around the phosphorylation site of Ser41 (Q-A-S_P-F-R).

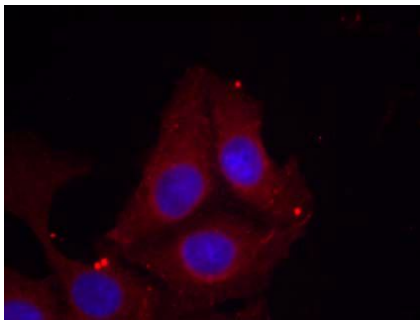
Purification: The antibody was affinity-purified from rabbit antiserum by affinity-chromatography using epitope-specific phosphopeptide. The antibody against non-phosphopeptide was removed by chromatography using non-phosphopeptide corresponding to the phosphorylation site.

Specificity/Sensitivity: GAP43(Phospho-Ser41) Antibody detects endogenous levels of GAP43 protein only when phosphorylated at serine 41

Reactivity: Human, Mouse, Rat

Applications:

Predicted MW: 43 kd IF : 1:100~1:200



Immunofluorescence staining of
methanol-fixed HeLa cells using GAP43
(Phospho-Ser41) Antibody (#11281, Red).

Background :

GAP43 encoded by this gene has been termed a 'growth' or 'plasticity' protein because it is expressed at high levels in neuronal growth cones during development and axonal regeneration. This protein is considered a crucial component of an effective regenerative response in the nervous system. Alternatively spliced transcript variants encoding distinct isoforms have been found for this gene

References:

Rachael L. Neve, et.al. (1998) J. Neurosci; 18: 7757.

Yiping Shen, et.al. (2002) J. Neurosci; 22: 239.

Chantal Gamby, et.al. (1996) J. Biol. Chem; 271: 26698.