



CaMKII (Ab-286) Antibody

#21279

Catalog Number: 21279-1, 21279-2

Amount: 50µg/50µl, 100µg/100µl

Swiss-Prot No. : Q9UQM7

Form of Antibody: Rabbit IgG in phosphate buffered saline (without Mg²⁺ and Ca²⁺), pH 7.4, 150mM NaCl, 0.02% sodium azide and 50% glycerol.

Storage/Stability: Store at -20°C/1 year

Immunogen: The antiserum was produced against synthesized non-phosphopeptide derived from Human CaMKII around the phosphorylation site of threonine 286 (Q-E-Tp-V-D).

Purification: The antibody was affinity-purified from rabbit antiserum by affinity-chromatography using epitope-specific immunogen.

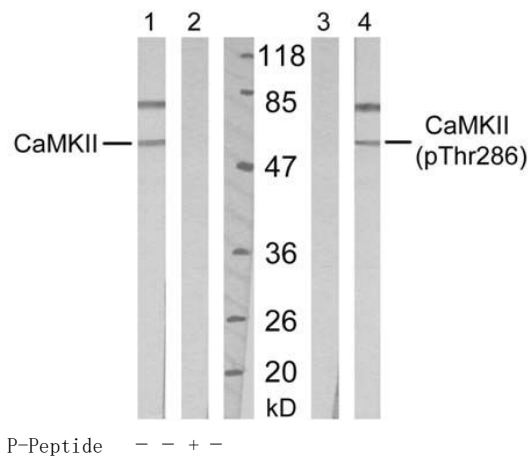
Specificity/Sensitivity: CaMKII (Ab-286) antibody detects endogenous levels of total CaMKII protein

Reactivity: Human, Mouse, Rat

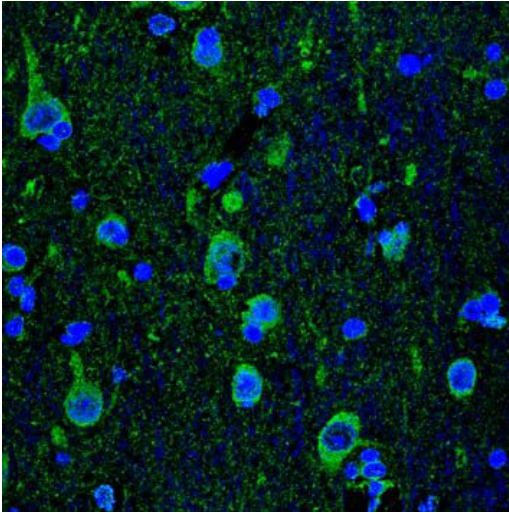
Applications:

Predicted MW: 50 kd

WB: 1:500~1:1000 IF: 1:100~1:200



Western blot analysis of extract from Mouse brain tissue, using CaMKII (Ab-286) antibody (#21279, Lane 1 and 2) and CaMKII (phospho-Thr286) antibody (#11287, Lane 3 and 4)



Immunofluorescence staining of paraffin-embedded human hippocampal region tissue from the falling sickness disease using CaMKII (Ab-286) antibody (#21279, green).

Background :

CaM-kinase II (CAMK2) is a prominent kinase in the central nervous system that may function in long-term potentiation and neurotransmitter release. Member of the NMDAR signaling complex in excitatory synapses it may regulate NMDAR-dependent potentiation of the AMPAR and synaptic plasticity

References:

J Bossuyt, K Helmstadter, X Wu, et al. (2008) Ca²⁺/Calmodulin-Dependent Protein Kinase II {delta} and Protein Kinase D Overexpression Reinforce - Circulation Research, 102(6):695-702.