



## Raf1 (Ab-338) Antibody

#21202

**Catalog Number:** 21202-1, 21202-2

**Amount:** 50µg/50µl, 100µg/100µl

**Swiss-Prot No. :** P04049

**Form of Antibody:** Rabbit IgG in phosphate buffered saline (without Mg<sup>2+</sup> and Ca<sup>2+</sup>), pH 7.4, 150mM NaCl, 0.02% sodium azide and 50% glycerol.

**Storage/Stability:** Store at -20°C/1 year

**Immunogen:** The antiserum was produced against synthesized non-phosphopeptide derived from human Raf1 around the phosphorylation site of serine 338 (R-D-S<sub>P</sub>-S-Y).

**Purification:** The antibody was affinity-purified from rabbit antiserum by affinity-chromatography using epitope-specific immunogen

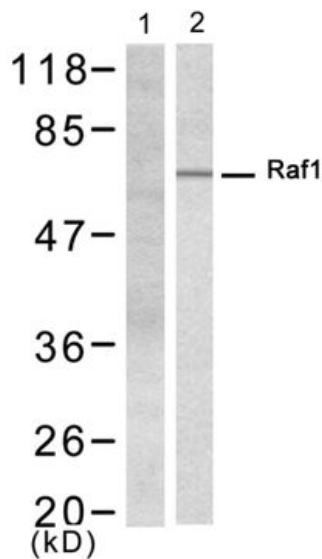
**Specificity/Sensitivity:** Raf1 (Ab-338) Antibody detects endogenous levels of total Raf1 protein.

**Reactivity:** Human, Mouse,

**Applications:**

Predicted MW: 73 kd

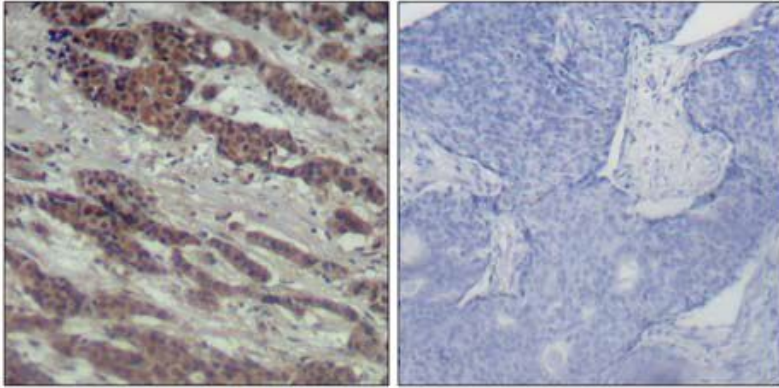
WB: 1:500~1:1000 IHC: 1:50~1:100



Peptide + -

Western blot analysis of extract from 293 cell, using Raf1

(Ab-338) Antibody (#21202, Lane 1 and 2).



Peptide - +

Immunohistochemical analysis of paraffin-embedded

human breast carcinoma tissue using Raf1 (Ab-338)

Antibody (#21202).

**Background :**

Involved in the transduction of mitogenic signals from the cell membrane to the nucleus. Part of the Ras-dependent signaling pathway from receptors to the nucleus. Protects cells from apoptosis mediated by STK3.

**References:**

Adams DG, et al. (2005) J Biol Chem. 280(52):42644-54.

Miura S, et al. (2003) Biochem Biophys Res Commun. 306(4):924-9.

Noser JA, et al. (2007) Mol Ther. 15(8):1531-6.