



PKD/PKC μ (Ab-910) Antibody

#21128

Catalog Number: 21128-1, 21128-2

Amount: 50 μ g/50 μ l, 100 μ g/100 μ l

Swiss-Prot No. : Q15139

Form of Antibody: Rabbit IgG in phosphate buffered saline (without Mg²⁺ and Ca²⁺), pH 7.4, 150mM NaCl, 0.02% sodium azide and 50% glycerol.

Storage/Stability: Store at -20°C/1 year

Immunogen: The antiserum was produced against synthesized non-phosphopeptide derived from human PKD/PKC μ around the phosphorylation site of serine 910 (R-V-Sp-I-L).

Purification: The antibody was affinity-purified from rabbit antiserum by affinity-chromatography using epitope-specific immunogen.

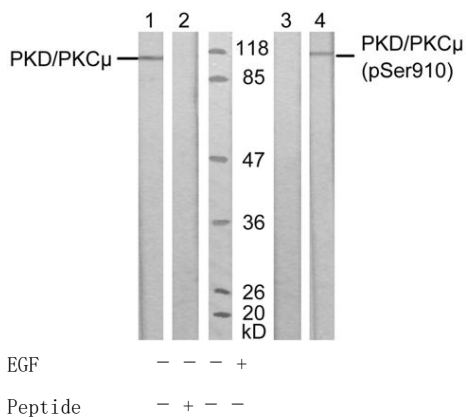
Specificity/Sensitivity: PKD/PKC μ (Ab-910) antibody detects endogenous levels of total PKD/PKC μ protein.

Reactivity: Human, Mouse, Rat

Applications:

Predicted MW: 115 kd

WB: 1:500~1:1000



Western blot analysis of extract from A431 cells, untreated or treated with EGF (200ng/ml, 10min), using PKD/PKC μ (Ab-910) antibody (#21128, Lane 1 and 2) and PKD/PKC μ (phospho-Ser910) antibody (#11096, Lane 3 and 4).

Background :

Converts transient diacylglycerol. (DAG) signals into prolonged physiological effects, downstream of PKC.

Involved in resistance to oxidative stress through activation of NF-kappa-B.

References:

Matthews SA, et al. J Biol Chem 1999 Sep; 274(37): 26543-26549

Brandlin I, et al. J Biol Chem 2002 Feb; 277(8): 6490-6496

Storz P, et al. Mol Pharmacol 2004 Oct; 66(4): 870-879