



## Rac1 (Phospho-Ser71) Antibody

#11203

**Catalog Number:** 11203-1, 11203-2

**Amount:** 50µg/50µl, 100µg/100µl

**Swiss-Prot No. :** P15154

**Form of Antibody:** Rabbit IgG in phosphate buffered saline (without Mg<sup>2+</sup> and Ca<sup>2+</sup>), pH 7.4, 150mM NaCl, 0.02% sodium azide and 50% glycerol.

**Storage/Stability:** Store at -20°C/1 year

**Immunogen:** The antiserum was produced against synthesized phosphopeptide derived from Human Rac1 around the phosphorylation site of serine 71 (P-L-S<sup>P</sup>-Y-P).

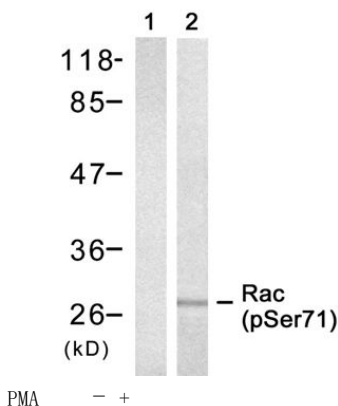
**Purification:** The antibody was affinity-purified from rabbit antiserum by affinity-chromatography using epitope-specific phosphopeptide. The antibody against non-phosphopeptide was removed by chromatography using non-phosphopeptide corresponding to the phosphorylation site.

**Specificity/Sensitivity:** Rac1 (phospho-Ser71) antibody detects endogenous levels of Rac1 only when phosphorylated at serine 71.

**Reactivity:** Human, Mouse, Rat

### Applications:

Predicted MW: 28kd      WB: 1:500~1:1000



Western blot analysis of extract from 293 cell untreated or treated with PMA, using Rac1 (phospho-Ser71) antibody (#11203).

### Background :

Rac1 encoded by this gene is a GTPase which belongs to the RAS superfamily of small GTP-binding proteins. Members of this superfamily appear to regulate a diverse array of cellular events, including the control of cell growth, cytoskeletal reorganization, and the activation of protein kinases. Two transcript variants encoding different isoforms have been found for this gene.

### References:

Woods A, (2007) J Biol Chem. 282(32):23500-8.

Burnham CA, et al. (2007) FEMS Microbiol Lett. 272(1):8-14.

Thurnherr T, et al. (2006) J Neurosci. 26(40):10110-9.