



Met (Ab-1349) Antibody

#21230

Catalog Number: 21230-1, 21230-2

Amount: 50µg/50µl, 100µg/100µl

Swiss-Prot No. : P08587

Form of Antibody: Rabbit IgG in phosphate buffered saline (without Mg²⁺ and Ca²⁺), pH 7.4, 150mM NaCl, 0.02% sodium azide and 50% glycerol.

Storage/Stability: Store at -20°C/1 year

Immunogen: The antiserum was produced against synthesized non-phosphopeptide derived from Human Met around the phosphorylation site of tyrosine 1349 (E-H-Y^P-V-H).

Purification: The antibody was affinity-purified from rabbit antiserum by affinity-chromatography using epitope-specific immunogen.

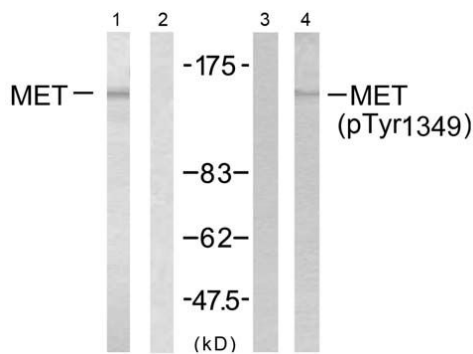
Specificity/Sensitivity: Met (Ab-1349) antibody detects endogenous levels of total Met protein

Reactivity: Human, Mouse, Rat

Applications:

Predicted MW: 156kd

WB: 1:500~1:1000



Western blot analysis of extracts from HepG2 cells, using (Ab-1349) antibody (#21230, Line 1 and 2) and Met (phospho-Tyr1349) antibody (#11238, Line 3 and 4).

Peptide - + - -

Background :

Receptor for hepatocyte growth factor and scatter factor. Has a tyrosine-protein kinase activity. Functions in cell proliferation, scattering, morphogenesis and survival.

References:

Fan S, et al. (2001) Mol Cell Biol; 21(15): 4968-4984

Schiering N, et al. (2003) Proc Natl Acad Sci U S A; 100(22): 12654-12659

Plopper GE, et al. (1995) Mol Biol Cell; 6(10): 1349-1365

Ponzetto C, et al. (1993) Mol Cell Biol; 13(8): 4600-4608

Jackson PA, et al. (2001) Plant Physiol; 127(3): 1065-1076