



## Met (Ab-1003) Antibody

#21548

**Catalog Number:** 21548-1, 21548-2

**Amount:** 50µg/50µl, 100µg/100µl

**Swiss-Prot No. :** P08587

**Form of Antibody:** Rabbit IgG in phosphate buffered saline (without Mg<sup>2+</sup> and Ca<sup>2+</sup>), pH 7.4, 150mM NaCl, 0.02% sodium azide and 50% glycerol.

**Storage/Stability:** Store at -20°C/1 year

**Immunogen:** The antiserum was produced against synthesized non-phosphopeptide derived from Human Met around the phosphorylation site of tyrosine 1003 (V-D-Y<sub>P</sub>-R-A).

**Purification:** The antibody was affinity-purified from rabbit antiserum by affinity-chromatography using epitope-specific immunogen.

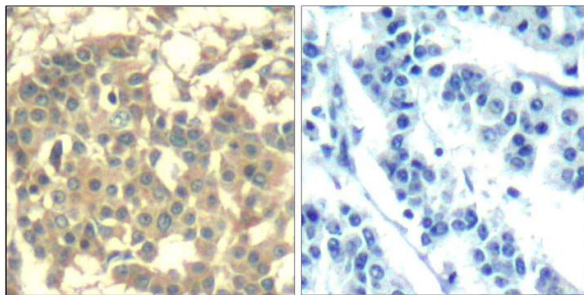
**Specificity/Sensitivity:** Met (Ab-1003) antibody detects endogenous levels of total Met protein

**Reactivity:** Human, Mouse, Rat

**Applications:**

Predicted MW: 156kd

IHC: 1:50~1:100



Immunohistochemical analysis of paraffin-embedded human breast carcinoma tissue using Met (Ab-1003) Antibody (#21548).

**Background :**

Receptor for hepatocyte growth factor and scatter factor. Has a tyrosine-protein kinase activity. Functions in cell proliferation, scattering, morphogenesis and survival.

**References:**

Weidner, K.M. et al. (1993) *J. Cell Biol.* 121, 145-154.

Traxler, P. et al. (2001) *Med. Res. Rev.* 21, 499-512.

Schaeper, U. et al. (2000) *J. Cell Biol.* 149, 1419-1432.

Park, M. et al. (1986) *Cell* 45, 895-904.