



## Met (Ab-1234) Antibody

#21220

**Catalog Number:** 21220-1, 21220-2

**Amount:** 50µg/50µl, 100µg/100µl

**Swiss-Prot No. :** P08587

**Form of Antibody:** Rabbit IgG in phosphate buffered saline (without Mg<sup>2+</sup> and Ca<sup>2+</sup>), pH 7.4, 150mM NaCl, 0.02% sodium azide and 50% glycerol.

**Storage/Stability:** Store at -20°C/1 year

**Immunogen:** The antiserum was produced against synthesized non-phosphopeptide derived from Human Met around the phosphorylation site of tyrosine 1234 (K-E-Y<sup>P</sup>-Y-S).

**Purification:** The antibody was affinity-purified from rabbit antiserum by affinity-chromatography using epitope-specific immunogen.

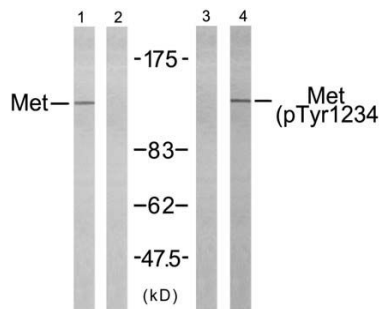
**Specificity/Sensitivity:** Met (Ab-1234) antibody detects endogenous levels of total Met protein

**Reactivity:** Human, Mouse, Rat

### Applications:

Predicted MW: 156kd

WB: 1:500~1:1000



Western blot analysis of extracts from HepG2 cells using Met (Ab-1234) antibody (#21220, Line 1 and 2) and Met (phospho-Tyr1234) antibody (#11227, Line 3 and 4).

P-peptide	-	-	+	-
peptide	-	+	-	-

### Background :

Receptor for hepatocyte growth factor and scatter factor. Has a tyrosine-protein kinase activity. Functions in cell proliferation, scattering, morphogenesis and survival.

### References:

Na Li, Hanjiang Fu, Yi Tie, et al. (2008) miR-34a inhibits migration and invasion by downregulation of c-Met expression in human hepatocellular carcinoma cells *Cancer Letters, In Press, Corrected Proof*

This article references the use of the #21220 in the following applications: **WB**