



JunB (Ab-259) Antibody

#21027

Catalog Number: 21027-1, 21027-2

Amount: 50µg/50µl, 100µg/100µl

Swiss-Prot No. : P17275

Form of Antibody: Rabbit IgG in phosphate buffered saline (without Mg²⁺ and Ca²⁺), pH 7.4, 150mM NaCl, 0.02% sodium azide and 50% glycerol.

Storage/Stability: Store at -20°C/1 year

Immunogen: The antiserum was produced against synthesized non-phosphopeptide derived from Human JunB around the phosphorylation site of serine 259 (P-V-S^P-P-I).

Purification: The antibody was affinity-purified from rabbit antiserum by affinity-chromatography using epitope-specific immunogen.

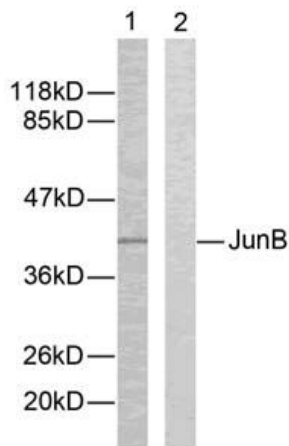
Specificity/Sensitivity: JunB (Ab-259) antibody detects endogenous levels of total JunB protein.

Reactivity: Human, Mouse, Rat

Applications:

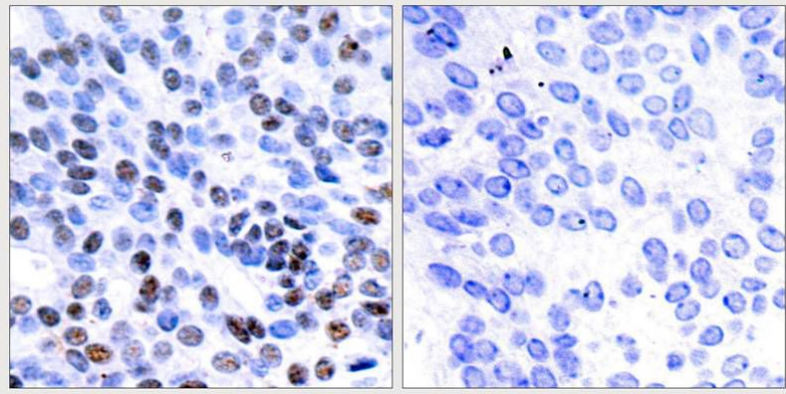
Predicted MW: 43kd

WB: 1:500~1:1000 IHC: 1:50~1:100



Peptide - +

Western blot analysis of extracts from HeLa cells using JunB (Ab-259) antibody (#21027).



Immunohistochemical analysis of paraffin-embedded human breast carcinoma tissue using JunB (Ab-259) antibody (#21027).

Background :

Transcription factor involved in regulating gene activity following the primary growth factor response. Binds to the DNA sequence 5'-TGA[CG]TCA-3'

References:

Beausoleil S A, et al. (2004) Proc Natl Acad Sci U S A. 101(33): 12130-12135.