



HSP90B (Ab-254) Antibody

#21290

Catalog Number: 21290-1, 21290-2

Amount: 50µg/50µl, 100µg/100µl

Swiss-Prot No. : P08238

Form of Antibody: Rabbit IgG in phosphate buffered saline (without Mg²⁺ and Ca²⁺), pH 7.4, 150mM NaCl, 0.02% sodium azide and 50% glycerol.

Storage/Stability: Store at -20°C/1 year

Immunogen: The antiserum was produced against synthesized non-phosphopeptide derived from human HSP90B around the phosphorylation site of serine 254 (V-G-S_P-D-E)

Purification: The antibody was affinity-purified from rabbit antiserum by affinity-chromatography using epitope-specific immunogen.

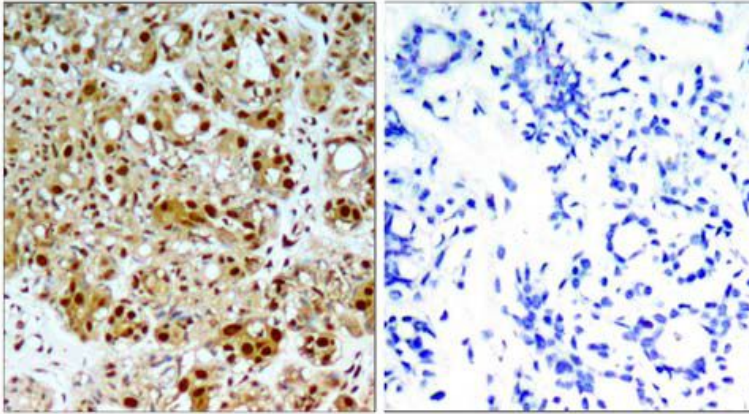
Specificity/Sensitivity: HSP90B(Ab-254) antibody detects endogenous levels of total HSP90B protein.

Reactivity: Human, Mouse, Rat

Applications:

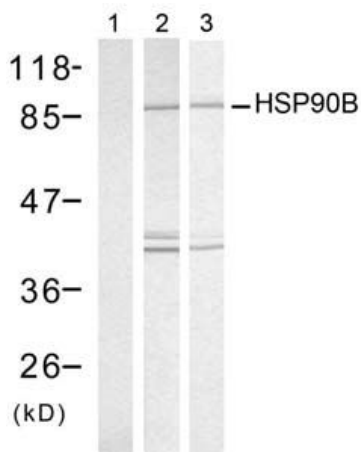
Predicted MW: 92kd

WB: 1:500~1:1000 IHC: 1:50~1:100 IF: 1:100~1:200



Peptide - +

Immunohistochemical analysis of paraffin-embedded human breast carcinoma tissue using HSP90B(Ab-254) antibody (#21290).

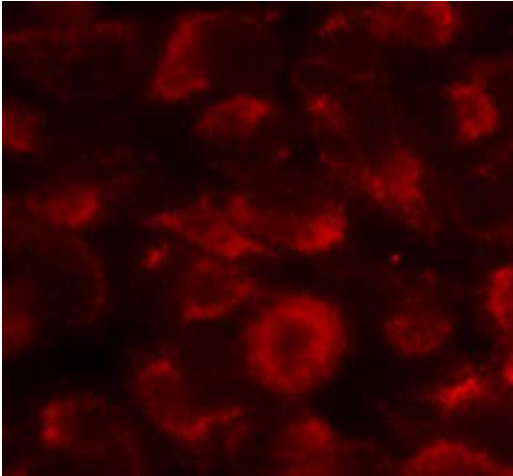


UV - +

Heat Shock +

Peptide + -

Immunohistochemical analysis of paraffin-embedded human breast carcinoma tissue, using HSP90B (Ab-254) antibody (#21290).



Immunofluorescence staining of methanol-fixed HeLa cells showing cytoplasmic staining using HSP90B (Ab-254) antibody (#21290).

Background :

Molecular chaperone. Has ATPase activity

References:

- Zhao R, Houry WA.(2007) Adv Exp Med Biol; 594: 27-36.
- Olsen JV, et al. (2006) Cell; 127(3): 635-648
- Ogiso H, et al. (2004) Biochemistry; 43(49): 15510-15519