



HSP27 (Phospho-Ser15) Antibody

#11164

Catalog Number: 11164-1, 11164-2

Amount: 50 μ g/50 μ l, 100 μ g/100 μ l

Swiss-Prot No. : P04792

Form of Antibody: Rabbit IgG in phosphate buffered saline (without Mg²⁺ and Ca²⁺), pH 7.4, 150mM NaCl, 0.02% sodium azide and 50% glycerol.

Storage/Stability: Store at -20°C/1 year

Immunogen: The antiserum was produced against synthesized phosphopeptide derived from human HSP27 around the phosphorylation site of serine 15 (G-P-S^P-W-D).

Purification: The antibody was affinity-purified from rabbit antiserum by affinity-chromatography using epitope-specific phosphopeptide. The antibody against non-phosphopeptide was removed by chromatography using non-phosphopeptide corresponding to the phosphorylation site.

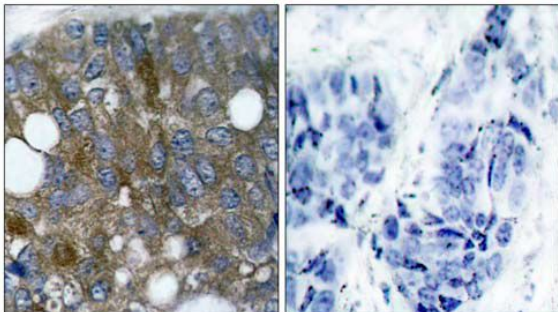
Specificity/Sensitivity: HSP27 (phospho-Ser15) antibody detects endogenous levels of HSP27 only when phosphorylated at serine 15.

Reactivity: Human,

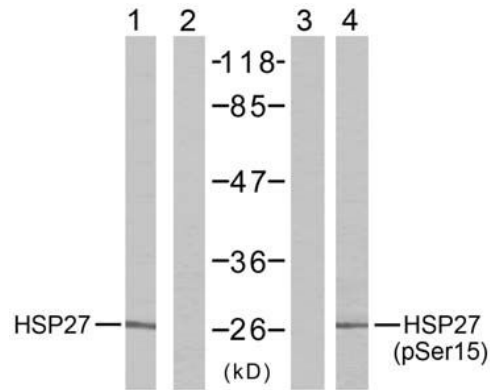
Applications:

Predicted MW: 27kd

WB: 1:500~1:1000 IHC: 1:50~1:100



P-Peptide - +
 . Immunohistochemical analysis of paraffin-embedded
 human breast carcinoma tissue using HSP27(Phospho-Ser15) antibody (#11164) .



UV - - - +

Peptide - + - -

Western blot analysis of extracts from HeLa cells using HSP27 (Ab-15) antibody (#21144, Lane 1 and 2) and HSP27 (phospho-Ser15) antibody (#11164, Lane 3 and 4).

Background :

Involved in stress resistance and actin organization

References:

- Tremolada L, et al. (2005) *Proteomics*. 5(3): 788-795.
- McGregor E, et al. (2004) *Mol Cell Proteomics*. 3(2): 115-124.
- Benn SC, et al. (2002) *Neuron*. 36(1): 45-56.
- MacDonald JA, et al. (2002) *Mol Cell Proteomics*. 1(4): 314-322.