



## HSP27 (Ab-15) Antibody

#21144

**Catalog Number:** 21144-1, 21144-2

**Amount:** 50  $\mu$ g/50  $\mu$ l, 100  $\mu$ g/100  $\mu$ l

**Swiss-Prot No. :** P04792

**Form of Antibody:** Rabbit IgG in phosphate buffered saline (without Mg<sup>2+</sup> and Ca<sup>2+</sup>), pH 7.4, 150mM NaCl, 0.02% sodium azide and 50% glycerol.

**Storage/Stability:** Store at -20°C/1 year

**Immunogen:** The antiserum was produced against synthesized non-phosphopeptide derived from human HSP27 around the phosphorylation site of serine 15 (G-P-S<sup>P</sup>-W-D).

**Purification:** The antibody was affinity-purified from rabbit antiserum by affinity-chromatography using epitope-specific immunogen.

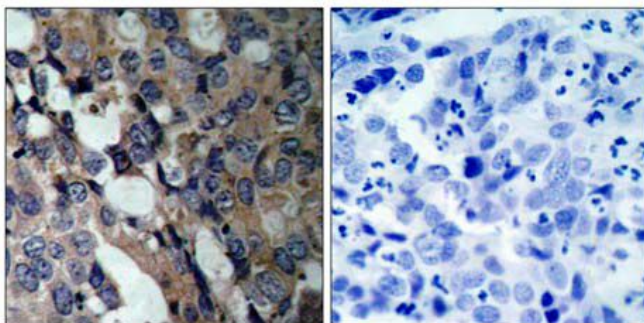
**Specificity/Sensitivity:** HSP27 (Ab-15) antibody detects endogenous levels of total HSP27 protein.

**Reactivity:** Human,

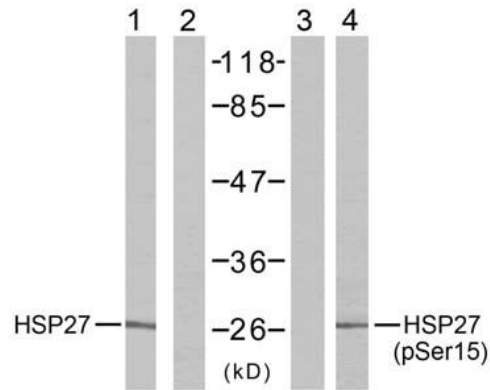
### Applications:

Predicted MW: 27kd

WB: 1:500~1:1000 IHC: 1:50~1:100



Peptide - +  
 . Immunohistochemical analysis of paraffin-embedded  
 human breast carcinoma tissue using HSP27 (Ab-15) antibody (#21144) .



UV - - - +

Peptide - + - -

Western blot analysis of extracts from HeLa cells using HSP27 (Ab-15) antibody (#21144, Lane 1 and 2) and HSP27 (phospho-Ser15) antibody (#11164, Lane 3 and 4).

### Background :

Involved in stress resistance and actin organization

### References:

- Tremolada L, et al. (2005) *Proteomics*. 5(3): 788-795.
- McGregor E, et al. (2004) *Mol Cell Proteomics*. 3(2): 115-124.
- Benn SC, et al. (2002) *Neuron*. 36(1): 45-56.
- MacDonald JA, et al. (2002) *Mol Cell Proteomics*. 1(4): 314-322.