



## HSF1 (Ab-303) Antibody

#21255

**Catalog Number:** 21255-1, 21255-2

**Amount:** 50µg/50µl, 100µg/100µl

**Swiss-Prot No. :** Q00613

**Form of Antibody:** Rabbit IgG in phosphate buffered saline (without Mg<sup>2+</sup> and Ca<sup>2+</sup>), pH 7.4, 150mM NaCl, 0.02% sodium azide and 50% glycerol.

**Storage/Stability:** Store at -20°C/1 year

**Immunogen:** The antiserum was produced against synthesized non-phosphopeptide derived from human HSF1 around the phosphorylation site of serine 303 (P-P-S<sup>P</sup>-P-P)

**Purification:** The antibody was affinity-purified from rabbit antiserum by affinity-chromatography using epitope-specific immunogen.

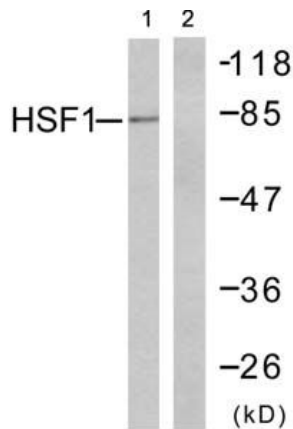
**Specificity/Sensitivity:** HSF1 (Ab-303) Antibody detects endogenous levels of total HSF1 protein

**Reactivity:** Human

**Applications:**

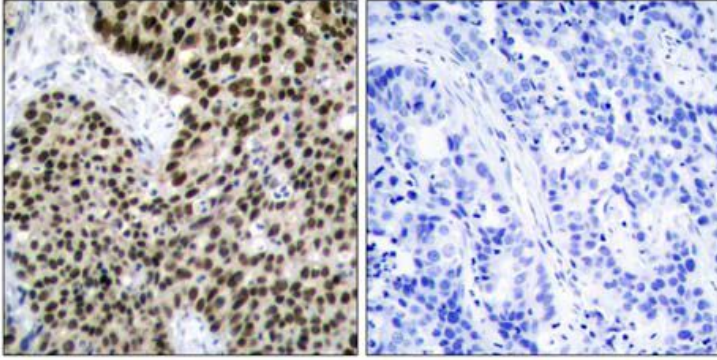
Predicted MW: 82 kd

WB: 1:500~1:1000 IHC: 1:50~1:100



Peptide - +

Western blot analysis of extracts from MCF7 cells, using HSF1 (Ab-303) antibody (#21255).



Immunohistochemical analysis of paraffin-embedded human breast carcinoma tissue using HSF1 (Ab- 303) antibody (#21255).

**Background :**

DNA-binding protein that specifically binds heat shock promoter elements (HSE) and activates transcription. In higher eukaryotes, HSF is unable to bind to the HSE unless the cells are heat shocked

**References:**

- Parvaneh Rafiee, et.al. (2006) Am J Physiol Cell Physiol ; 291: C931 - C945
- Fumika Shinozaki, et.al. (2006) J. Biol. Chem ; 281: 16361 - 16369.
- Eiichi Takaki, et.al. (2006) J. Biol. Chem ; 281: 4931 - 4937.
- Jan-Jong Hung, et.al. (1998) J. Biol. Chem ; 273: 31924.