



eIF4E (Ab-209) Antibody

#21226

Catalog Number: 21226-1, 21226-2

Amount: 50µg/50µl, 100µg/100µl

Swiss-Prot No. : P06730

Form of Antibody: Rabbit IgG in phosphate buffered saline (without Mg²⁺ and Ca²⁺), pH 7.4, 150mM NaCl, 0.02% sodium azide and 50% glycerol.

Storage/Stability: Store at -20°C/1 year

Immunogen: The antiserum was produced against synthesized non-phosphopeptide derived from Human eIF4E around the phosphorylation site of serine 209 (S-G-Sp-T-T).

Purification: The antibody was affinity-purified from rabbit antiserum by affinity-chromatography using epitope-specific immunogen.

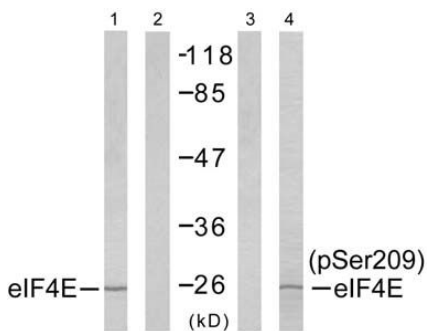
Specificity/Sensitivity: eIF4E (Ab-209) antibody detects endogenous levels of total eIF4E protein.

Reactivity: Human, Mouse, Rat

Applications:

Predicted MW: 25 kd

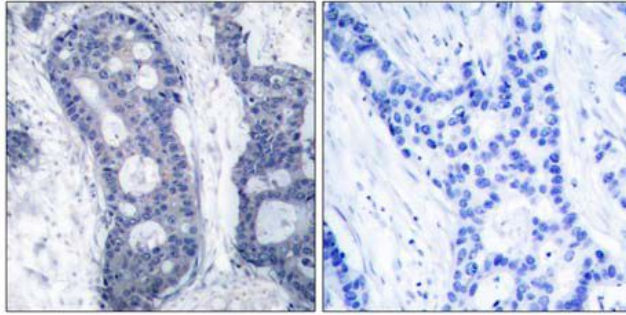
WB: 1:500~1:1000 IHC: 1:50~1:100 IF: 1:100~1:200



FBS - - - +

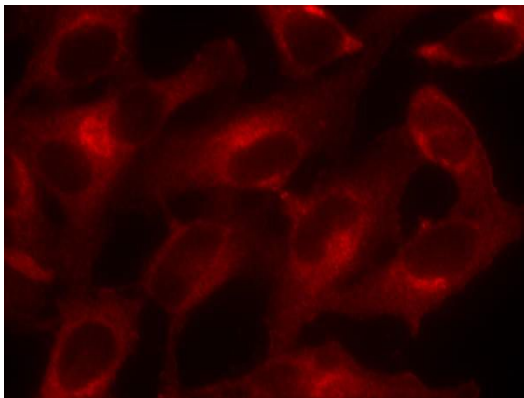
Peptide - + - -

Western blot analysis of extract from NIH/3T3 cells untreated or treated with 10% serum (15min), using eIF4E (Ab-209) antibody (#21226, Line 1 and 2) and eIF4E (phospho-Ser209) antibody (#11233, Line 3 and 4).



Peptide - +

Immunohistochemical analysis of paraffin-embedded human breast carcinoma tissue using eIF4E (Ab-209) antibody (#21226).



Immunofluorescence staining of methanol-fixed HeLa cells using eIF4E (Ab-209) antibody (#21226,Red)

Background :

Recognizes and binds the 7-methylguanosine-containing mRNA cap during an early step in the initiation of protein synthesis and facilitates ribosome binding by inducing the unwinding of the mRNAs secondary structures.

References:

- Li BD, et al. (1998) Ann Surg; 227(5): 756-763
- Altmann M, et al. (1989) Nucleic Acids Res; 17(18): 7520
- De Gregorio E, et al. (2001) RNA; 7(1): 106-113
- Gu W, et al. (2004) Nucleic Acids Res; 32(15): 4448-4461
- Ohlmann T, et al. (1996) EMBO J; 15(6): 1371-1382