



ATF-2 (Ab-73or55) Antibody

#21032

Catalog Number: 21032-1, 21032-2

Amount: 50µg/50µl, 100µg/100µl

Swiss-Prot No. : P15336

Form of Antibody: Rabbit IgG in phosphate buffered saline (without Mg²⁺ and Ca²⁺), pH 7.4, 150mM NaCl, 0.02% sodium azide and 50% glycerol.

Storage/Stability: Store at -20°C/1 year

Immunogen: The antiserum was produced against synthesized non-phosphopeptide derived from human ATF-2 around the phosphorylation site of threonine 73 or 55 (T-P-T^P-R-F).

Purification: The antibody was affinity-purified from rabbit antiserum by affinity-chromatography using epitope-specific immunogen.

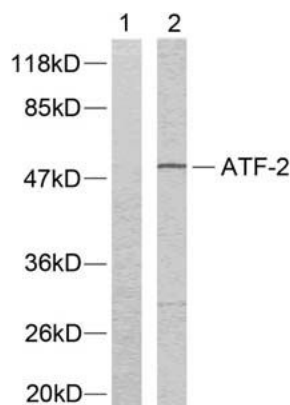
Specificity/Sensitivity: ATF-2 (Ab-73 or 55) antibody detects endogenous levels of total ATF-2 protein.

Reactivity: Human, Mouse, Rat

Applications:

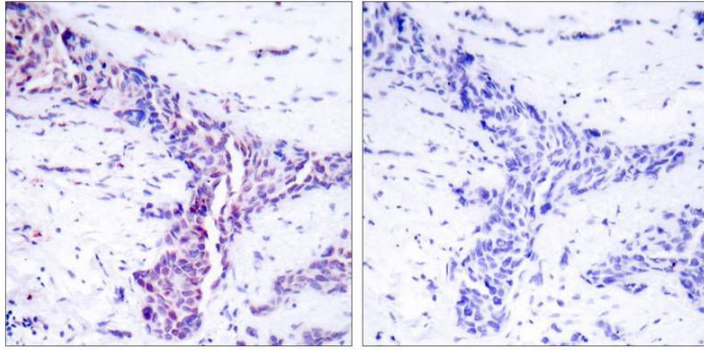
Predicted MW: 65-75 kd

WB: 1:500~1:1000 IHC: 1:50~1:200



Peptide + -

Western blot analysis of extracts from LOVO cells using
ATF-2 (Ab-73 or 55) antibody (#21032).



Immunohistochemical analysis of paraffin-embedded human breast carcinoma tissue using ATF-2 (Ab-73 or 55) antibody (#21032).

Background :

Transcriptional activator, probably constitutive, which binds to the cAMP-responsive element (CRE) (consensus: 5'-GTGACGT[AC][AG]-3'), a sequence present in many viral and cellular promoters. Interaction with JUN redirects JUN to bind to CREs preferentially over the 12-O-tetradecanoylphorbol-13-acetate response elements (TRES) as part of an ATF2-c-Jun complex.

References:

- Beausoleil S A, et al. (2004) Proc Natl Acad Sci U S A. 101(33): 12130-12135.
Abdel-Hafiz H A, et al. (1992) Mol Endocrinol. 6: 2079-2089.
Gupta S, et al. (1995) Science. 267: 389-393.
Van Dam H, et al. (1995) EMBO J. 14(8): 1798-1811.
Livingstone C, et al. (1995) EMBO J. 14: 1785-1797.