



## Signalway Antibody

### Tyrosine Hydroxylase (Ab-31)

**#21330**

**Catalog Number:** 21330-1, 21330-2

**Amount:** 50µg/50µl, 100µg/100µl

**Swiss-Prot No. :** P07101

**Form of Antibody:** Rabbit IgG in phosphate buffered saline (without Mg<sup>2+</sup> and Ca<sup>2+</sup>), pH 7.4, 150mM NaCl, 0.02% sodium azide and 50% glycerol.

**Storage/Stability:** Store at -20°C/1 year

**Immunogen:** The antiserum was produced against synthesized non-phosphopeptide derived from Human Tyrosine Hydroxylase around the phosphorylation site of serine 31

**Purification:** The antibody was affinity-purified from rabbit antiserum by affinity-chromatography using epitope-specific immunogen

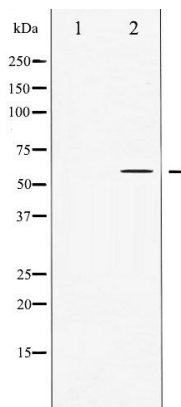
**Specificity/Sensitivity:** Tyrosine Hydroxylase (Ab-31) Antibody detects endogenous levels of total Tyrosine Hydroxylase protein

**Reactivity:** Human, Mouse, Rat

#### Applications:

Predicted MW: 60 kd

WB: 1:500~1:1000 IHC: 1:50~1:200



Western blot analysis of Tyrosine Hydroxylase expression in UV treated 293 whole cell lysates, The lane on the left is treated with the antigen-specific peptide.

#### Background :

The protein encoded by Tyrosine Hydroxylase is involved in the conversion of tyrosine to dopamine. It is the rate-limiting enzyme in the synthesis of catecholamines, hence plays a key role in the physiology of adrenergic neurons. Mutations in this gene have been associated with autosomal recessive Segawa syndrome. Alternatively spliced transcript variants encoding different isoforms have been noted for this gene.