



Signalway Antibody

Tyrosine Hydroxylase (Phospho-Ser31)

#11330

Catalog Number: 11330-1, 11330-2

Amount: 50µg/50µl, 100µg/100µl

Swiss-Prot No. : P07101

Form of Antibody: Rabbit IgG in phosphate buffered saline (without Mg²⁺ and Ca²⁺), pH 7.4, 150mM NaCl, 0.02% sodium azide and 50% glycerol.

Storage/Stability: Store at -20°C/1 year

Immunogen: The antiserum was produced against synthesized phosphopeptide derived from Human Tyrosine Hydroxylase around the phosphorylation site of serine 31

Purification: The antibody was affinity-purified from rabbit antiserum by affinity-chromatography using epitope-specific phosphopeptide. The antibody against non-phosphopeptide was removed by chromatography using non-phosphopeptide corresponding to the phosphorylation site.

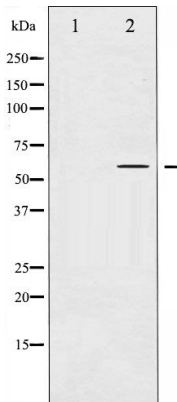
Specificity/Sensitivity: Tyrosine Hydroxylase (Phospho-Ser31) Antibody detects endogenous levels of Tyrosine Hydroxylase only when phosphorylated at serine 31.

Reactivity: Human, Mouse, Rat

Applications:

Predicted MW: 60 kd

WB: 1:500~1:1000 IHC: 1:50~1:200



Western blot analysis of Tyrosine Hydroxylase phosphorylation expression in UV treated 293 whole cell lysates, The lane on the left is treated with the antigen-specific peptide.

Background :

The protein encoded by Tyrosine Hydroxylase is involved in the conversion of tyrosine to dopamine. It is the rate-limiting enzyme in the synthesis of catecholamines, hence plays a key role in the physiology of adrenergic neurons. Mutations in this gene have been associated with autosomal recessive Segawa syndrome. Alternatively spliced transcript variants encoding different isoforms have been noted for this gene.

www.swbio.com

Order : order@swbio.com

Technical : tech@swbio.com