



PLC γ 2 (Ab-1217) Antibody

#21524

Catalog Number: 21524-1, 21524-2

Amount: 50 μ g/50 μ l, 100 μ g/100 μ l

Swiss-Prot No. : P16885

Form of Antibody: Rabbit IgG in phosphate buffered saline (without Mg²⁺ and Ca²⁺), pH 7.4, 150mM NaCl, 0.02% sodium azide and 50% glycerol.

Storage/Stability: Store at -20°C/1 year

Immunogen: The antiserum was produced against synthesized non-phosphopeptide derived from Human PLC γ 2 around the phosphorylation site of tyrosine 1217 (F-L-Y_p-D-T).

Purification: The antibody was affinity-purified from rabbit antiserum by affinity-chromatography using epitope-specific immunogen.

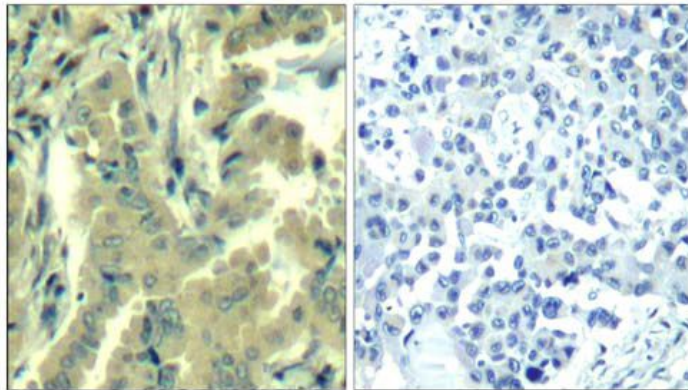
Specificity/Sensitivity: PLC γ 2 (Ab-1217) antibody detects endogenous levels of total PLC γ 2 protein

Reactivity: Human, Mouse, Rat

Applications:

Predicted MW: 150 kd

IHC: 1:50~1:100 IF: 1:100~1:200

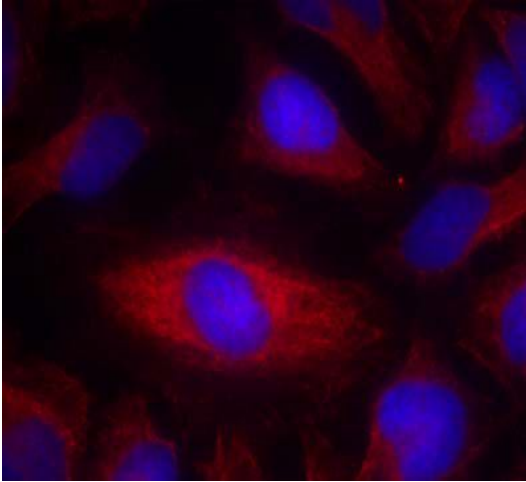


Peptide - +

Immunohistochemical analysis of paraffin-embedded

human lung carcinoma tissue using PLC- γ 2 (Ab-1217)

Antibody (#21524).



Immunofluorescence staining of methanol-fixed HeLa cells using PLC- γ 2 (Ab-1217) Antibody (#21524, Red).

Background :

The production of the second messenger molecules diacylglycerol. (DAG) and inositol 1,4,5-trisphosphate (IP3) is mediated by activated phosphatidylinositol-specific phospholipase C enzymes. It is a crucial enzyme in transmembrane signaling.

References:

- Singer, W. D. et al. (1997) *Annu. Rev. Biochem.* 66, 475-509.
- Smrcka, A. V. et al. (1991) *Science* 251, 804-807.
- Yue, C. et al. (2000) *J. Biol. Chem.* 275, 30220-30225.
- Watanabe, D. et al. (2001) *J. Biol. Chem.* 276, 38595-38601.