



Niban Antibody

#21401

Catalog Number: 21401-1, 21401-2

Amount: 50µg/50µl, 100µg/100µl

Swiss-Prot No. : Q9BZQ8

Form of Antibody: Rabbit IgG in phosphate buffered saline (without Mg²⁺ and Ca²⁺), pH 7.4, 150mM NaCl, 0.02% sodium azide and 50% glycerol.

Storage/Stability: Store at -20°C/1 year

Immunogen: The antiserum was produced against a synthesized peptide corresponding to the 908-920 amino-acid sequence from human niban protein ("KDDVKEGEGGQES").

Purification: The antibody was affinity-purified from rabbit antiserum by affinity-chromatography using epitope-specific immunogen

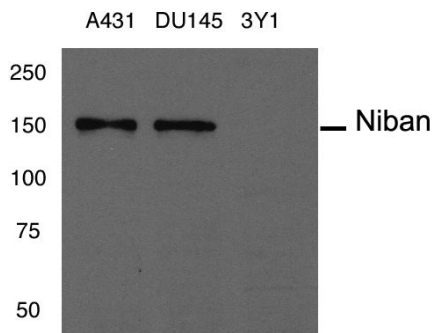
Specificity/Sensitivity: Niban antibody detects endogenous levels of total Niban protein

Reactivity: Human,

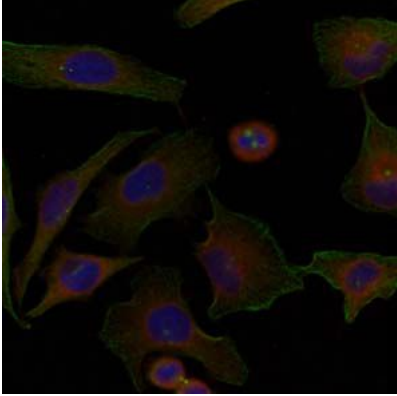
Applications:

Predicted MW: 150kd

WB: 1:500~1:1000 IF: 1:50~1:100



Western blot analysis of extract from human A431, DU145 cancer cells and rat 3Y1 fibroblast cells, using Niban antibody (#21401).



Immunofluorescence staining of methanol-fixed HeLa cells using Niban antibody (#21401, Red).

Background :

Regulates phosphorylation of a number of proteins involved in translation regulation including EIF2A, EIF4EBP1 and RPS6KB1. May be involved in the endoplasmic reticulum stress response

References:

Villén J, Beausoleil SA, Gerber SA, Gygi SP Large-scale phosphorylation analysis of mouse liver. Proc Natl Acad Sci U S A 2007 Jan 30; 104(5): 1488-93