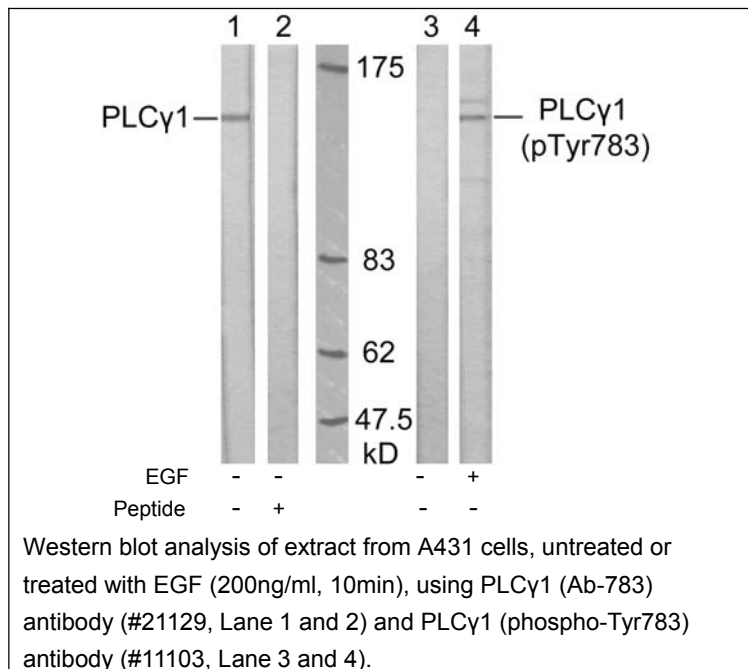


PLC γ 1 (Phospho-Tyr783) Antibody

- Catalog Number:** 11103-1, 11103-2
Amount: 50 μ g/50 μ l, 100 μ g/100 μ l
Swiss-Prot No. : P19174
Form of Antibody: Rabbit IgG in phosphate buffered saline (without Mg²⁺ and Ca²⁺), pH 7.4, 150mM NaCl, 0.02% sodium azide and 50% glycerol.
Storage/Stability: Store at -20°C/1 year
Immunogen: The antiserum was produced against synthesized phosphopeptide derived from human PLC γ 1 around the phosphorylation site of tyrosine 783 (G-F-Y^P-V-E).
Purification: The antibody was affinity-purified from rabbit antiserum by affinity-chromatography using epitope-specific phosphopeptide. The antibody against non-phosphopeptide was removed by chromatography using non-phosphopeptide corresponding to the phosphorylation site.
Specificity/Sensitivity: PLC γ 1 (phospho-Tyr783) antibody detects endogenous levels of PLC γ 1 only when phosphorylated at tyrosine 783.
Reactivity: Human, Mouse, Rat
Applications: WB: 1:500~1:1000
References: DeBell KE, et al. Mol Cell Biol. 1999 Nov; 19(11): 7388-7398.
 Verí MC, et al. Mol Cell Biol. 2001 Oct; 21(20): 6939-6950.
 Sette C, et al. EMBO J. 2002 Oct 15; 21(20): 5386-5395.



For Research Use Only