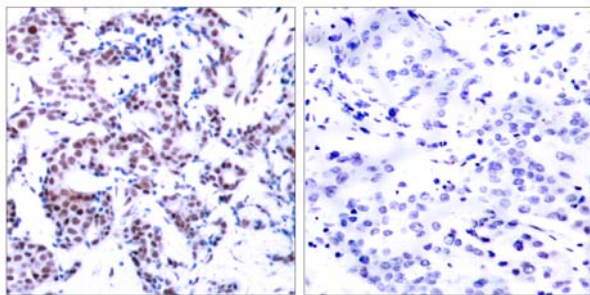


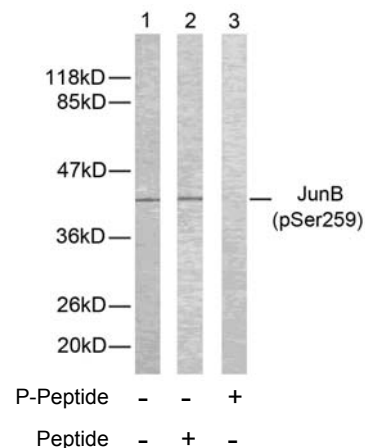
## JunB (Phospho-Ser259) Antibody

- Catalog Number:** 11027-1, 11027-2  
**Amount:** 50µg/50µl, 100µg/100µl  
**Form of Antibody:** Rabbit IgG in phosphate buffered saline (without Mg<sup>2+</sup> and Ca<sup>2+</sup>), pH 7.4, 150mM NaCl, 0.02% sodium azide and 50% glycerol.  
**Storage/Stability:** Store at -20°C/1 year  
**Immunogen:** The antiserum was produced against synthesized phosphopeptide derived from human JunB around the phosphorylation site of serine 259 (P-V-S<sup>P</sup>-P-I).  
**Purification:** The antibody was affinity-purified from rabbit antiserum by affinity-chromatography using epitope-specific phosphopeptide. The antibody against non-phosphopeptide was removed by chromatography using non-phosphopeptide corresponding to the phosphorylation site.  
**Specificity/Sensitivity:** JunB (phospho-Ser259) antibody detects endogenous levels of JunB only when phosphorylated at serine 259.  
**Reactivity:** Human, Mouse, Rat  
**Applications:** WB: 1:500~1:1000 IHC: 1:50~1:100  
**Swiss-Prot No. :** P17275  
**References:** Beausoleil S A, et al. (2004) Proc Natl Acad Sci U S A. 101(33): 12130-12135.



P-Peptide - +

Immunohistochemical analysis of paraffin-embedded human breast carcinoma using JunB (phospho-Ser259) antibody (#11027).



Western blot analysis of extracts from HeLa cells using JunB (phospho-Ser259) antibody (#11027).